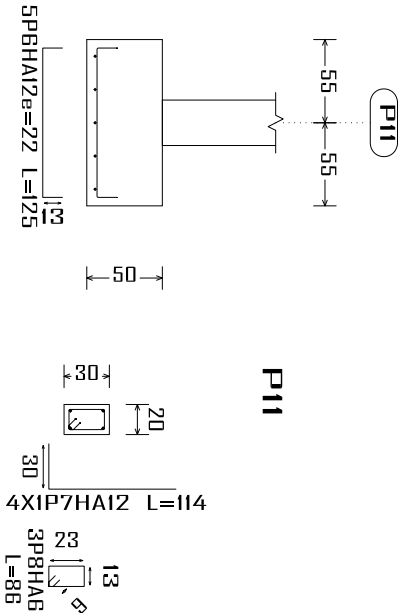
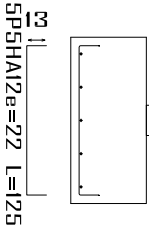
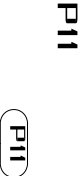
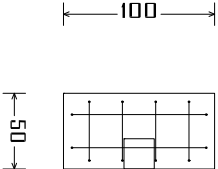
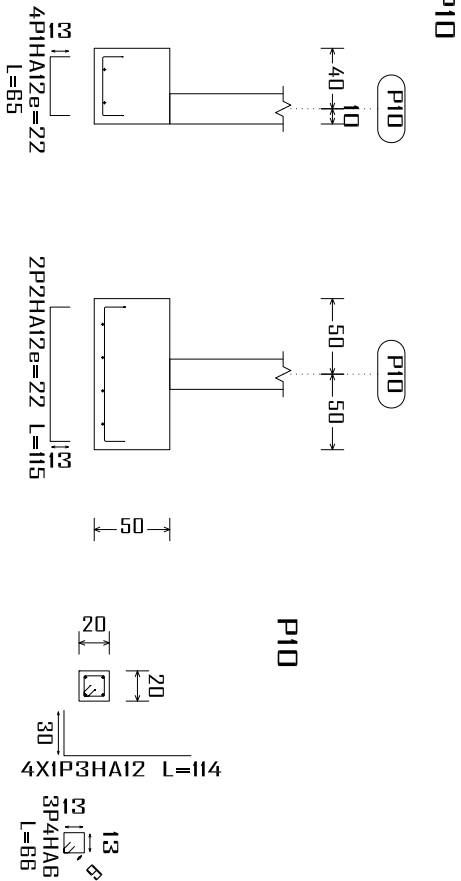
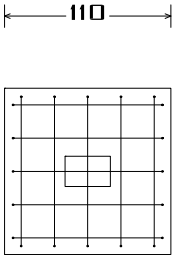


Élément	Pos.	Diam.	No.	Long. (cm)	Total (cm)	Fe E400 (kg)
P10	1	HA12	4	65	260	2,3
	2	HA12	2	115	230	2,0
	3	HA12	4	114	456	4,0
	4	HA6	3	66	198	0,4
Total+10%:						9,6
P11	5	HA12	5	125	625	5,5
	6	HA12	4	125	466	4,0
	7	HA12	4	114	456	4,0
	8	HA6	3	86	258	0,6
Total+10%:						17,2
HAB: 1,2						
HA12: 25,6						
Total: 26,8						



Récapitulatif Acier Fondations	Long. total (m)	Poids+10% (kg)	Total
Plan de ferrailage fondation			
Fe E400			
HA6	37.4	9	
HA8	246.3	107	
HA12	426.9	417	
HA16	149.9	260	
			793



Construction, extension, réhabilitation d'infrastructures sanitaires à Boromo et Dédougou			
Magasin DEDOUGOU		Plan de Ferrailage des semelles	
		A4	
Maitre d'ouvrage ENABEL		Avant Projet Détaillé	
		14/07/2025	
N° plan :		Dr.-Ing. Césaire HEMA (IGC N°709)	
Echelle : 1/100			
<div><div><div><div>G5</div><div>SSOCIATES</div><div>Ingénierie, Construction et Architecture</div></div></div></div>			